

# COOPERATIVE MAGNETIC IMAGING



Cooperative Magnetic Imaging

# A MESSAGE FROM OUR MEDICAL DIRECTOR

*At CMI, we offer our patients a unique combination of open and conventional system MRI diagnostic tests, with state-of-the-art equipment and full medical staff on-site.*

*By utilizing both highly skilled staff and the latest technology, CMI is able to offer patients advanced MRI imaging. Our radiologists have expertise in subspecialty areas, including musculo-skeletal, neuro, breast and vascular imaging. They have trained at some of the*

*best radiology programs in the country such as Harvard, Yale, Duke, Tufts and the Lahey Clinic. We work with your doctor in the same hospitals and facilities where they work. So, we are available for consultation and emergencies when and where our patients need us.*

*Not all imaging centers offer MRI services, and those that do usually offer only one type of MRI unit. At CMI, we offer our*

*"At CMI, we offer our patients the latest technology with several MRI units suitable for all types of imaging."*

*patients the latest technology with several MRI units suitable for all types of imaging. We have purchased the best equipment for each area of body imaging with maximum accuracy and patient comfort as our primary concerns.*

*I am proud to say that, I believe, our technical staff is unparalleled. All of our technologists have had advanced training in MRI and are registered and licensed in the state of New York. Our staff is also experienced with a wide range of patients, from infants to the elderly, and we have the capabilities to care for patients who might require more extensive care and observation.*

*CMI offers state of the art equipment, convenient locations and some of the best doctors and technologists in the practice of magnetic resonance imaging.*



**Dr. John J. Picano**  
*Medical Director  
Cooperative Magnetic Imaging*



▲ CMI's Main Campus at the Utica Business Park



## WELCOME TO COOPERATIVE MAGNETIC IMAGING

### *Why CMI is the better choice for your MRI service*

This is Cooperative Magnetic Imaging, or CMI. We are a unique consortium of highly skilled, board certified radiologists, certified registered technologists, registered nurses and support staff whose goal is to provide the most accurate diagnostics through the use of Magnetic Resonance Imaging (MRI) to the physicians and patients of Central New York.

CMI, since opening the first facility in 1989, offers the newest and most powerful diagnostic tools available with open mid and high-field MR imaging and conventional high-field MR imaging. We strive to meet and exceed physician and patient expectations; CMI was the first New York Designated MRI service in the Mohawk Valley.

At CMI, you receive patient-friendly approaches to leading edge diagnostic imaging.

### *About Our Technology*

Cooperative Magnetic Imaging is proud to utilize state-of-the-art MRI scanners with both open and conventional configurations, including mid-field and high-field strength magnets. As MRI technology has evolved over the years, CMI continues to purchase the latest scanners for our community.

Having the ability to offer both open and conventional MRI scanners, CMI can perform a variety of scans with patient comfort in mind. The open scanners at the Business Park and Ilion Campuses are best suited for claustrophobic patients. They also excel at musculoskeletal imaging, which are the studies that include the joints, muscles and the bones in the upper and lower extremities. Weight

bearing spine studies, which are used to simulate a patient standing, are

available at the Business

Park scanner. Weight

Bearing studies are helpful in evaluating patients who have symptoms when standing.



▲▲ CMI offers the latest technology in open and conventional MRI scanners.

## Cutting Edge Specialty Imaging

In addition to routine exams, the St. Luke's Campus has special coils for Breast Imaging, TMJ, and prostate exams. The St. Elizabeth's Campus has added software capabilities that allow for cardiac imaging. Several of our scanners have the capabilities to perform MRI Arthrograms of the extremities which help to better delineate joint space structures.

Breast MRI, which is offered at our St. Luke's Campus is used

to screen high risk women for breast cancer or determining the staging of breast cancer. CMI has radiologists, with advanced level training in breast imaging, who read all of our patients breast MRIs.

CMI performs a variety of scans including neurological, vascular, and musculoskeletal exams. We offer the technology and a level of

professional services that is usually found in larger cities and University settings.

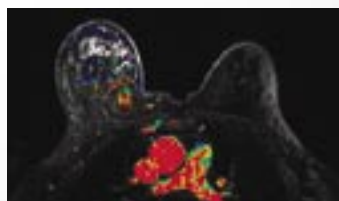
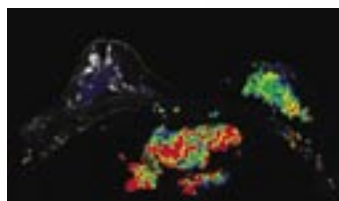
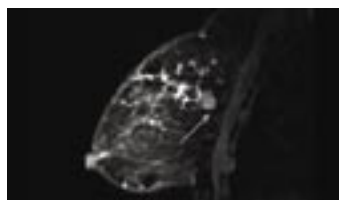
### How MRI Works.

The human body is made up of millions of atoms which are magnetic. When placed in a magnetic field, these atoms line up with the field much like a compass points to the North Pole. Radio waves, tuned to a specific frequency, tip these tiny magnets away from the magnetic field. As they tip, they gain energy. When the radio waves are turned off, the atoms try to realign with the magnetic field, releasing the energy they gained as very weak radio signals. A powerful antenna picks up these signals and sends them to a computer, which performs millions of calculations to produce images of the body for diagnosis which is finally transferred to film. These images provide physicians who are trained to interpret them with a wealth of diagnostic information which is then sent to your physician.



“Breast MRI... is used to screen high risk women for breast cancer or determining the staging of breast cancer”

▲ ▼ *Invivo's DynaCad™ computer-aided-detection (CAD) system, integrated with Siemens' MRI improves efficiency, standardization and quality in breast MR imaging.*



# FREQUENTLY ASKED QUESTIONS

## What is MRI?

Magnetic Resonance Imaging, or MRI, is an advanced method which allows your doctor to “see” inside the human body, very clear pictures, or images, of the soft tissues (muscles, fat and internal organs) without the use of X-rays and CT Scanning. Using two natural, safe forces—magnetic fields and radio waves – this unique imaging technique can look through hard bones to examine underlying soft tissue.

MRI is commonly used by physicians as a primary diagnostic tool. It can help provide a quick and more accurate diagnosis for physicians which in some situations can reduce the need for exploratory surgery and other diagnostic procedures.

## How Should I Get Ready for My Exam?

There is no special preparation for the exam. When you arrive at our office, please feel free to ask about matters that concern you. We want you to be comfortable.



We recommend that you dress comfortably, for example, sweatsuits or fleecewear. If your clothing contains zippers, metal snaps or buttons or metallic trimming, we'll ask you to change into examination clothes provided by our office.

For safekeeping, we will ask you to give us anything that might be affected or attracted

by the magnet – credit or bank cards, coins, keys, bobbie pins, jewelry, etc. These possessions will be placed in your own locked compartment until your MR is completed.

Bring your own CD or request your favorite radio station and relax. Our facility has been carefully designed for your comfort and well-being.

## Are there any risks or pain associated with having an MRI?

Besides being a totally painless examination, MRI poses no known side or after effects, making it a safe procedure for practically everyone. Please consult your physician and feel free to call CMI at any time.

## Who can be tested?... Almost Anyone!

Because the main component of MRI imaging systems is a powerful magnet, certain metallic items may interfere with the examination and may be hazardous to your safety.

It is important to tell your physician if your body contains a pacemaker, surgical or aneurysm clips, metal implants or prostheses or unremoved bullets, shrapnel or metallic foreign bodies. Be sure to tell us if you are pregnant.

If you have any questions regarding the MRI exam, please be sure to discuss them with your doctor.

## What Will My MRI Experience Be?

Although MRI is a very advanced medical technique, the MR exam is probably one of the easiest and most comfortable exams you may ever experience. In fact, you may bring your favorite CD with you or request a special radio station during the exam. You may eat normally and go about your daily routine. The technologist will simply ask you to lie down on a cushioned table which will automatically move into the magnet area after you have been comfortably positioned for scanning. The technologist will leave the magnet room but you will be in contact with him or her throughout the entire exam.

When the MR exam begins, you will hear a tapping to a hammering sound which will last for several minutes. Just relax – enjoy your music or even take a nap – but try to lie as still as possible since any movement during this time will blur the picture. The exam will last 15 to 60 minutes.

In some cases, patients may require an injection of gadolinium (a ferromagnetic contrast agent which enhances the visual properties for final diagnosis). This is accomplished by a nurse or a physician at CMI.

## How Will I Find Out the Results?

Your MRI images are examined by one of our physicians for interpretation, who then will consult with your doctor. Your doctor will then discuss the results with you.

# DIRECTIONS

## A ST. LUKE'S CAMPUS

CMI is located next to the Emergency Room. There is an outside entrance to CMI which is before the E.R. entrance. Patients may be dropped off right in front of the door by using the E.R.

## B SLOCUM DICKSON CAMPUS *IN NEW HARTFORD*

The outside entrance to CMI at Slocum Dickson is located behind the building. As you face the back of the Slocum Dickson building you will see our entrance and sign on the far left side of the Slocum Dickson building.

## C UTICA BUSINESS PARK CAMPUS *Open MRI*

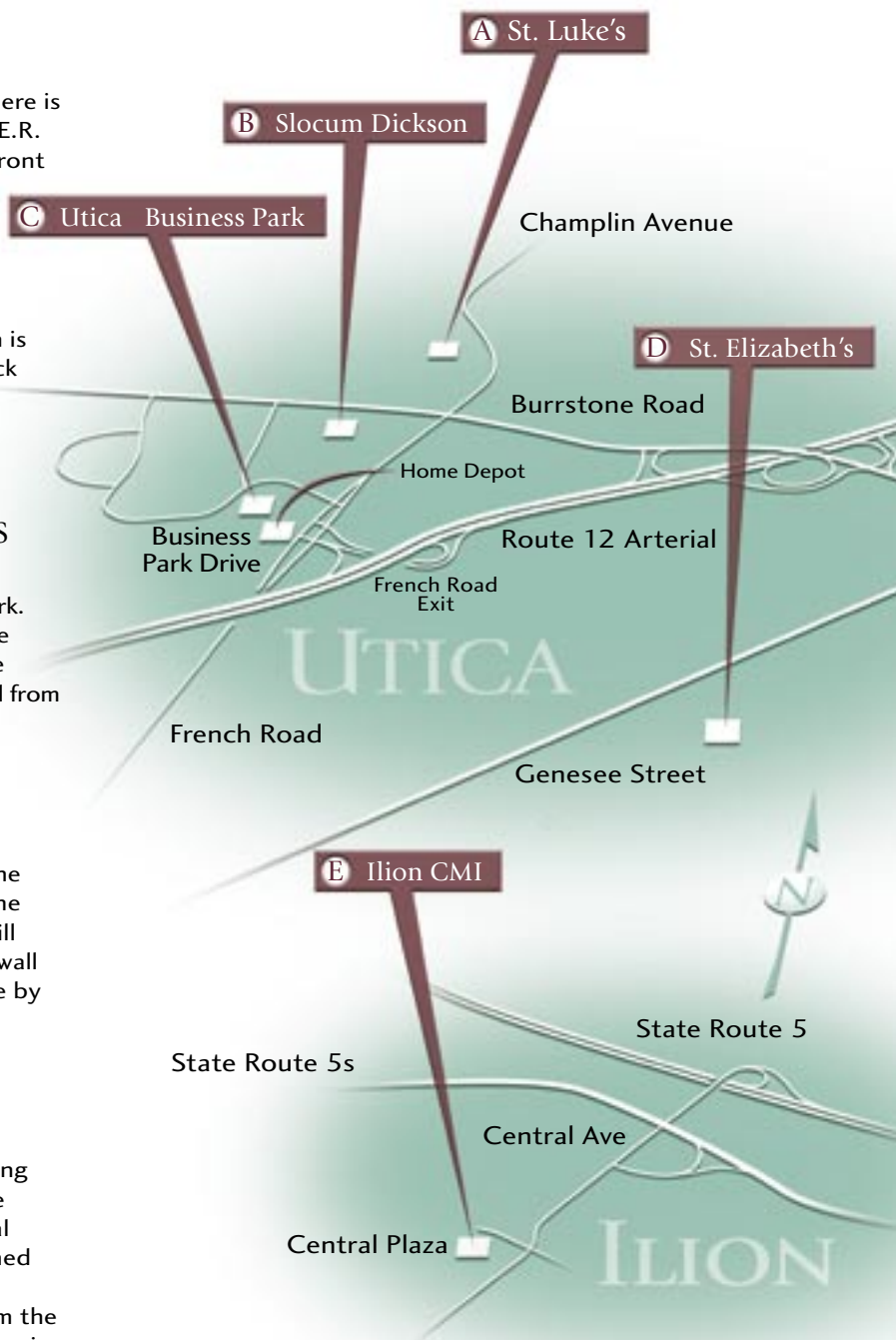
There are two ways to enter the Utica Business Park. The easiest way to find CMI is to enter through the French Road entrance to the Business Park. We are the first building on the left as you drive up the hill from this direction. We are right behind Home Depot.

## D ST. ELIZABETH'S CAMPUS

CMI is located a short distance from the main hospital entrance. CMI is easily accessed from the parking garage. Using the elevator or stairs to the main floor reception desk of the hospital, you will receive directions to follow clearly marked CMI wall signs to the CMI facility. Free parking is available by having your ticket stamped by CMI staff.

## E ILION CAMPUS *Open MRI*

CMI is located in the Central Plaza in Ilion. Parking is located on either side of Central Plaza. We are directly across from the Slocum Dickson Medical Offices in the building. Central Ave can be reached by taking State Route 5s to the 2nd Ilion exit, coming from the west, (1st Ilion exit coming from the East), onto Central Ave. The Central Avenue Plaza is located directly behind the Ilion Post Office.



# YOUR MRI APPOINTMENT IS SCHEDULED FOR:

Name \_\_\_\_\_

Date \_\_\_\_ / \_\_\_\_ / \_\_\_\_ Time \_\_\_\_\_ am pm

Your MRI will take place at the following CMI office:

- CMI/Utica Business Park – Open MRI**  
107 Business Park Drive, Utica Business Park • 315-792-4666
- CMI/St. Elizabeth's Campus**  
2209 Genesee Street, Utica • 315-624-7333
- CMI/Ilion Campus – Open MRI**  
55 Central Plaza, Ilion • 315-574-2090
- CMI/St. Luke's Campus**  
1656 Champlin Ave, Utica • 315-735-7287
- CMI/Slocum Dickson Campus**  
1729 Burrstone Road, New Hartford • Phone: 315-624-3750

Referred by \_\_\_\_\_

**!** It is important to tell your physician if your body contains a pacemaker, surgical or aneurysm clips, metal implants or prostheses or unremoved bullets, shrapnel or metallic foreign bodies. Be sure to tell us if you are pregnant.

## PLEASE NOTE

**It is important that you bring these items to your appointment.** Health insurance cards, compensation and no fault forms and prior CT and/or X-Rays pertaining to your present condition.

If you have any questions, please call: (315) 792-4666 between the hours of 8am and 9pm; Monday thru Friday.

## DIRECTIONS

See page 9 for maps and directions to each CMI campus.

## WEB SITE: WWW.CMI4MRI.COM

Please visit our web site for more information about our facilities, Magnetic Resonance Imaging and links to interesting sites about MRI. <http://www.cmi4mri.com>



**Cooperative Magnetic Imaging**

Toll Free 1-800-839-4666 • [www.cmi4mri.com](http://www.cmi4mri.com)